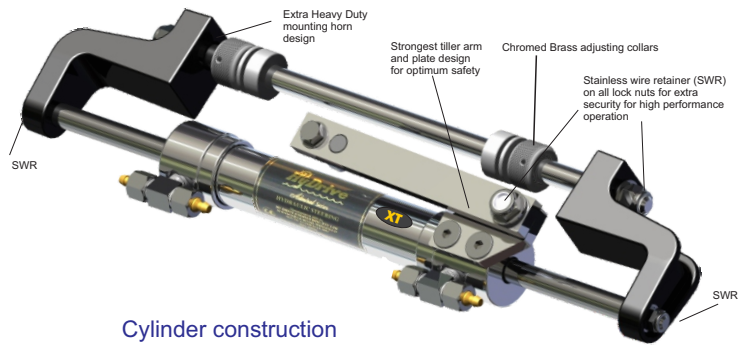


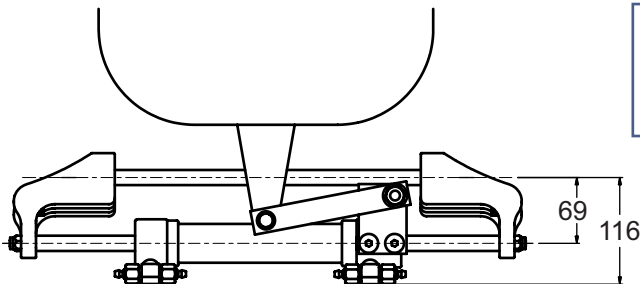
HYDRAULIC STEERING FOR OUTBOARD MOTORS



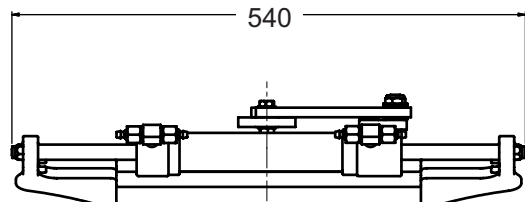
Cylinder construction
Bronze, Brass and Stainless steel

OBKIT1-XT

For Outboards up to single 350HP or dual outboards
Counter-rotating up to 1200HP total***

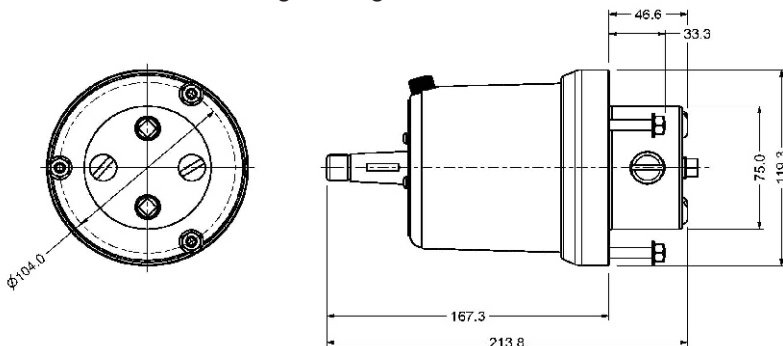


WHEEL TURNS
lock to lock
401 helm = 5.5
402 helm = 4.4



Model 211BH-XT Cylinder dimensions

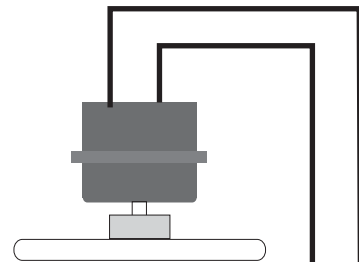
Capacity:- 154cc
Stroke:- 203mm
Weight:- 5Kg



Model 401 and 402 Helm pump dimensions

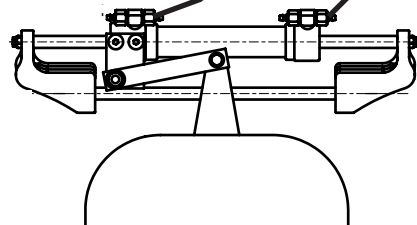
Model 401 Capacity:-28cc/rev
Model 402 Capacity:-35cc/rev
In-built Lock valve
Maximum working pressure:- 1000psi
Absolute maximum pressure:- 1500psi
Weight:- 5Kg

***POWER STEERING may be required for large HP installations for best performance and handling.



OBKIT1-XT

Complete Kit comprises:-
Model 401 Helm
Model 211BH-XT cylinder
2 litres ULTRA-15 fluid
15Mtrs 3/8" OD Nylon tubing
Bleeding Kit
All fittings
Installation Manual
Packed weight 15Kg



SIMPLE INSTALLATION TO ANY OUTBOARD**
See steering circuits for multiple outboards and catamaran installation options.

**For some model Honda and other 4-strokes the 211BH-Honda version is required to avoid interference on motor cowling.

HyDrive
HYDRAULIC STEERING